



Savuti

Savuti Lodge – Chobe National Park

A short bush flight carries us into the legendary Savuti region of central Chobe—a land of ancient rhythms, dramatic skies, and raw, wild beauty. Here, rugged hills, seasonal marshes, and open plains form one of the most iconic safari landscapes in Africa—a stage where predator and prey meet in high drama.



Boutique Comfort in the Wild

With just five beautifully appointed suites, Savuti Lodge combines intimacy with elegance. The atmosphere is quiet and refined, with a photography-filled lounge, well-curated bar, and inviting swimming pool area—perfect for relaxing between safaris. The lodge's style is grounded in natural textures, thoughtful design, and a deep connection to its surroundings.





















Nights by the Fire

After dark, return to camp for home-cooked meals, drinks under the stars, and the soft rhythm of the bush. From time to time, the staff gather in song—an impromptu, heartfelt choir that fills the night with warmth and culture.



What Makes It Special



A Predator's Kingdom

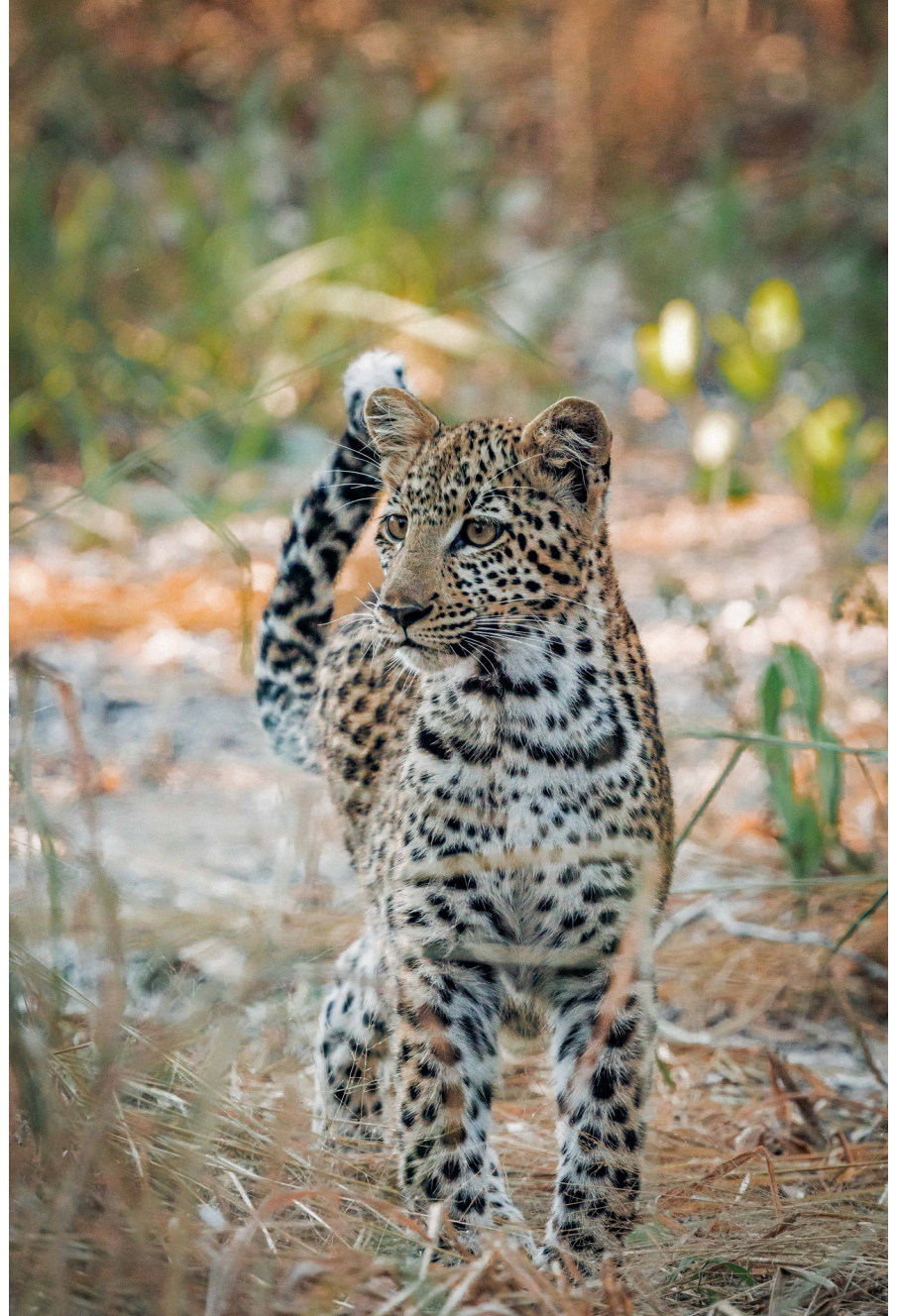
Savuti is famed for its intense predator activity—this is where lion prides have learned to hunt elephants, where leopards move like shadows, and where every game drive holds the promise of raw, unscripted wildlife moments.

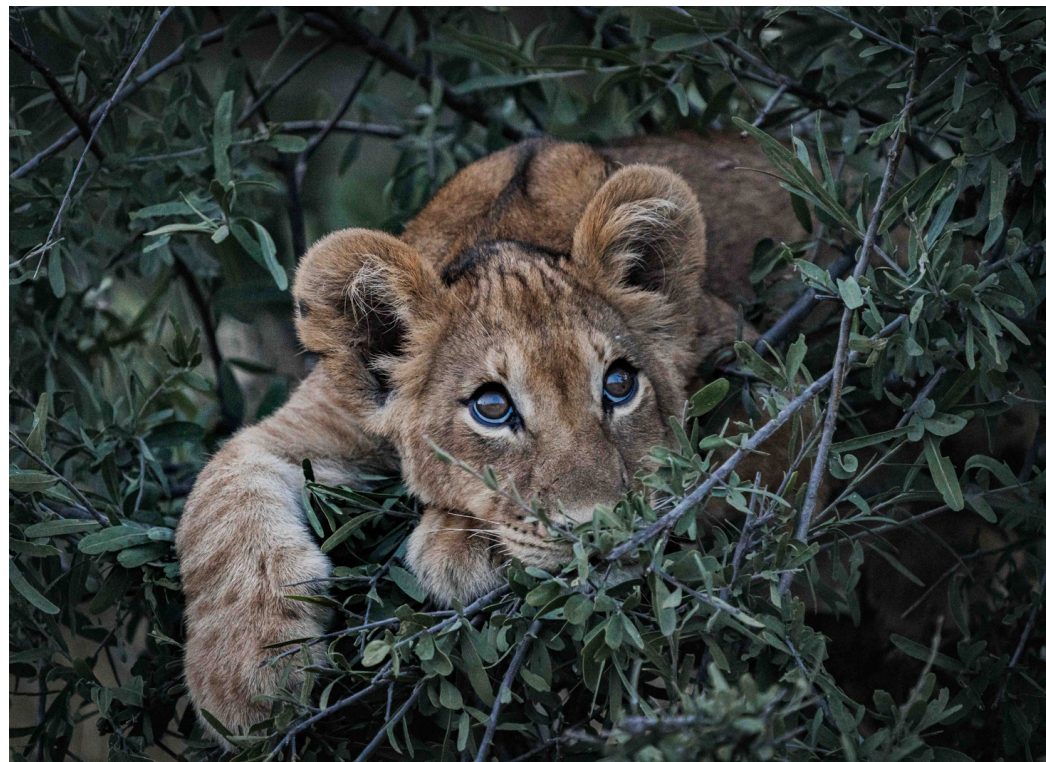
Seasonal Migrations and Towering Herds





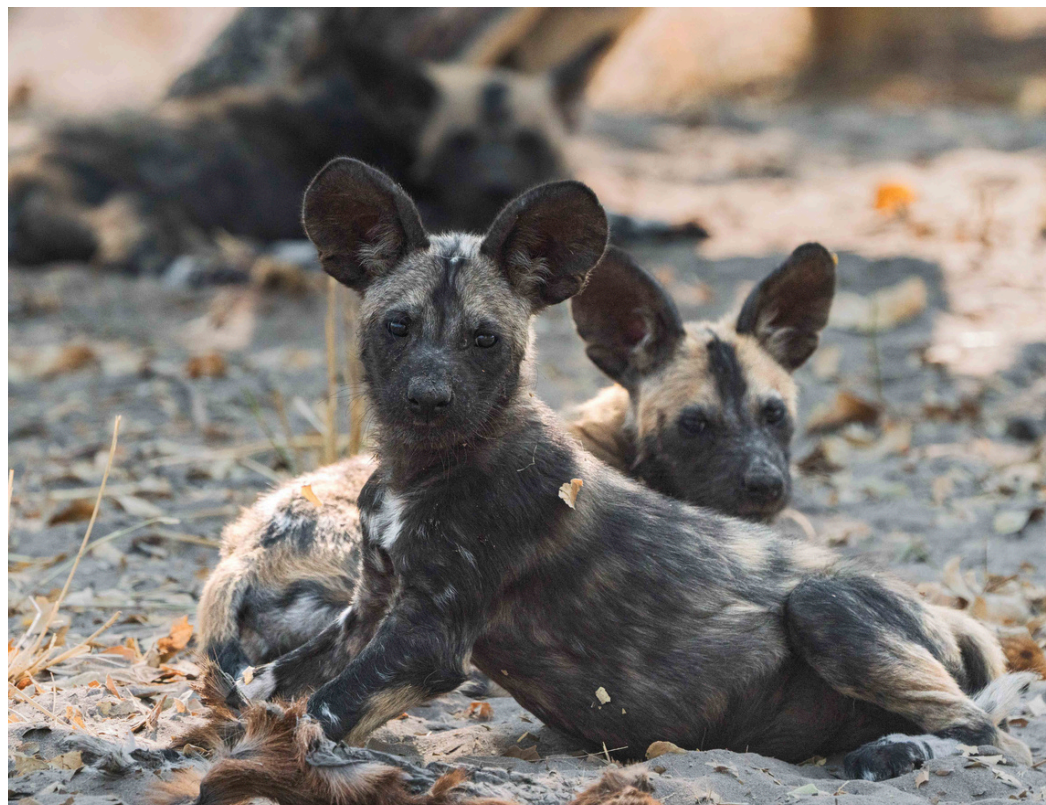








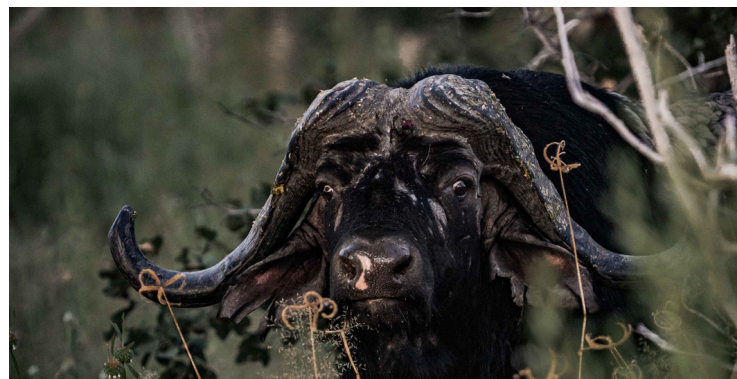
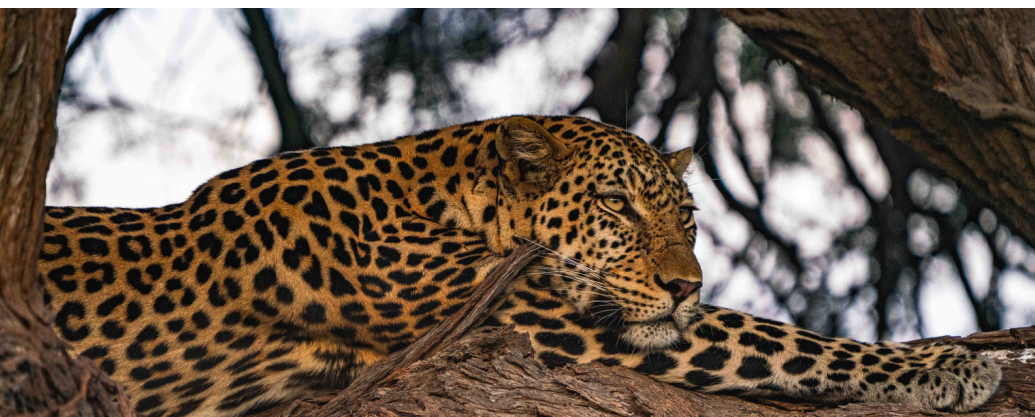














Seasonal Migration: November and April

In the Savuti region, zebra are known to be the main migratory species, moving between the Linyanti and Chobe areas toward the Mababe Depression in search of grazing.

Their movement can attract predators like lions and hyenas, making the region a hotspot for dramatic wildlife interactions during certain seasons.







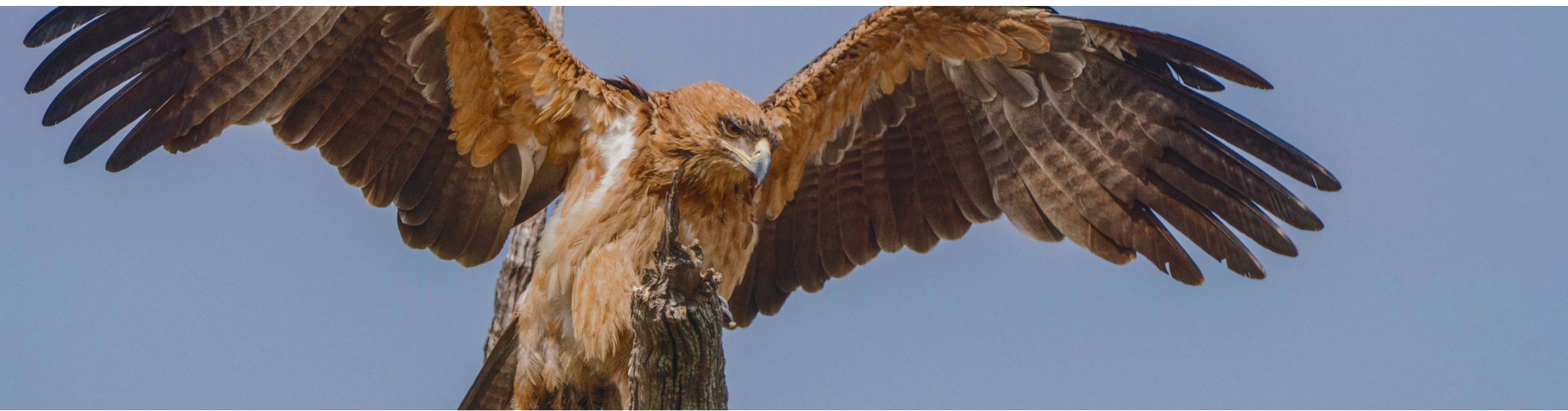


















Sundowners in the Open

Evenings often end with sundowners out on the plains, where wildlife silhouettes against the sky and the occasional baobab tree towers above the golden light. T

hese moments capture the stillness and scope of Africa's wilderness.

Landscapes Built for the Lens

From sculptural trees to dramatic horizons, Savuti's terrain is made for photography.

The changing light, wide views, and constant motion make it a place where every shot tells a story.

